



# Performance and versatility

A surgical table that simply does more.

STERIS® 5095  
GENERAL SURGICAL TABLE

# Productivity and flexibility

## Productivity is its specialty

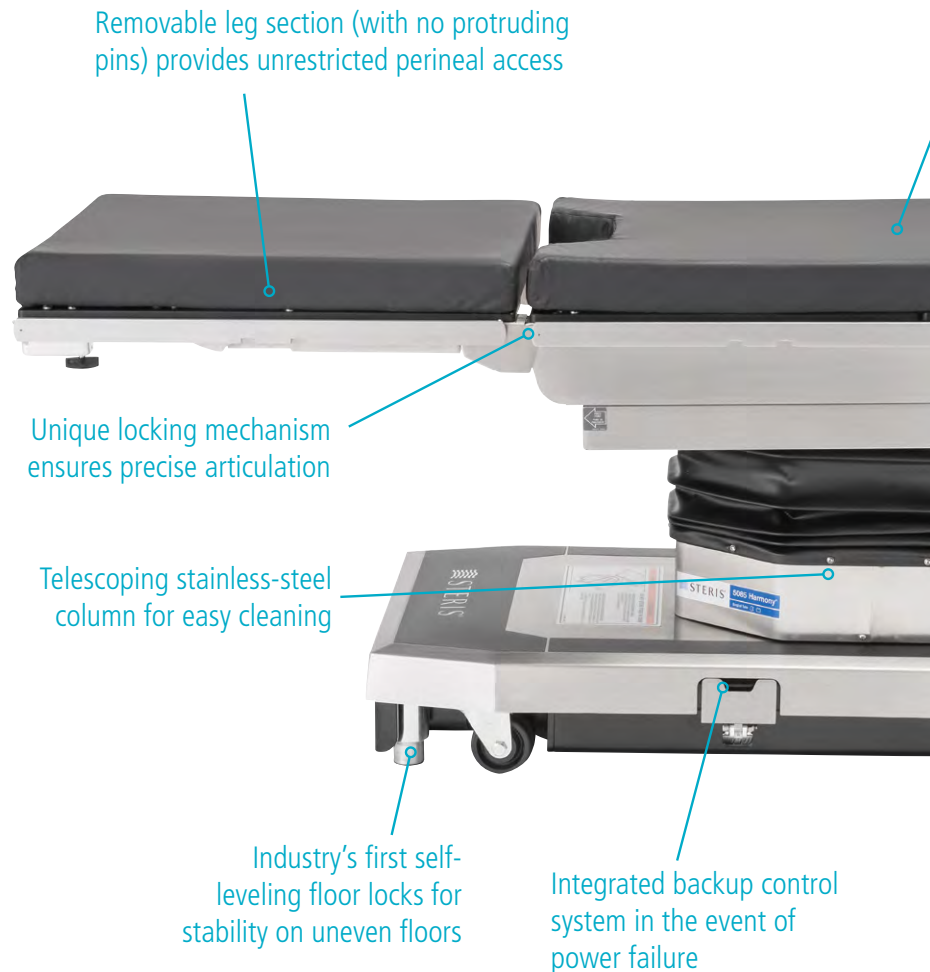
The STERIS 5095 General Surgical Table quickly and easily adapts to the workflow of virtually every surgical specialty. A single table accommodates the following procedures and more:

- Cardiothoracic
- Endovascular
- Bariatric
- Robotic
- ENT/Ophthalmology
- Orthopedic
- Gynecologic/Obstetric
- Urologic/Kidney

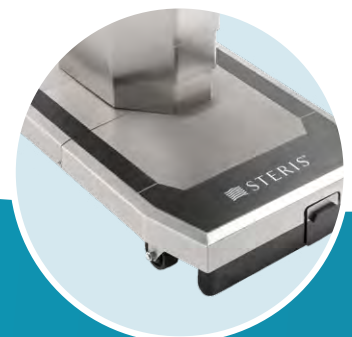
## Designed with safety in mind

A return-to-level button carefully repositions the patient to maintain hemostasis, while auto-limit sensors prevent table damage from colliding sections and informs the caregiver of alternative table articulation.

Large, clinical  
83" total body



For easy cleaning (contains no VELCRO® Brand fastener)



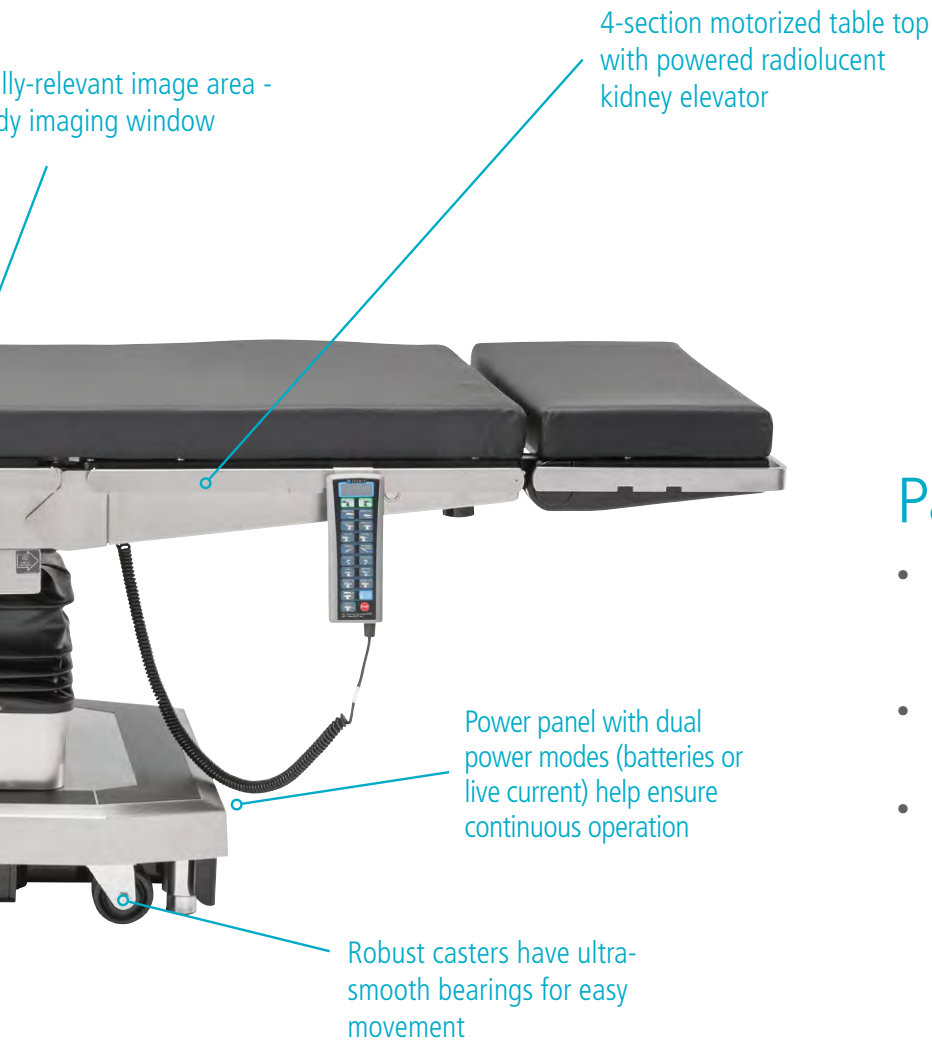
Increases surgical access for patient positioning, particularly in Lithotomy positioning

## Strong, yet flexible

Higher weight capacities accommodate heavier patients and allow for more bariatric surgeries. The 5095 General Surgical Table provides an exceptionally low height for MIS, robotic and bariatric techniques without sacrificing the height needed for orthopedic and cardiac procedures.

## Patient weight capacity

- 1,200 lb. (544 kg) patient support, including raise/lower (when centered on the column in Normal Orientation)
- 900 lb. (408 kg) full table articulation (when centered on the column in Normal Orientation)
- 600 lb. (272 kg) full table articulation, including slide



### Flush side rails

Absence of exposed screws promotes contamination prevention measures



### Integrated manual override system

Easy access to backup hand control and foot pedal to provide articulation even when power is out



### Clinically relevant positioning

Achieve 90% or more Trendelenburg from lowest height positions



# Improving anesthesia care

## A warm welcome from the start

**Provide more warmth when it matters most.** Heat loss from the patient to the surgical environment, combined with the additional heat loss of general anesthesia induction, can cause a patient's temperature to fall below the normal range.



The optional STERIS Patient Warming System provides valuable conductive warming at times before, during or after procedures in the OR.



### **Warming right away**

Patients are provided warmth from a heated surgical table pad and optional overbody blanket immediately upon transfer to the surgical table.

### **Conductive, not convective**

Conductive heat transfer is through direct contact between the patient and the table and overbody blanket.

### **Compact design**

A compact controller can be mounted to the table side rail or IV pole close to anesthesia. Cables are thin and easy to connect. The durable overbody blanket minimizes bulk that may be a nuisance during use.

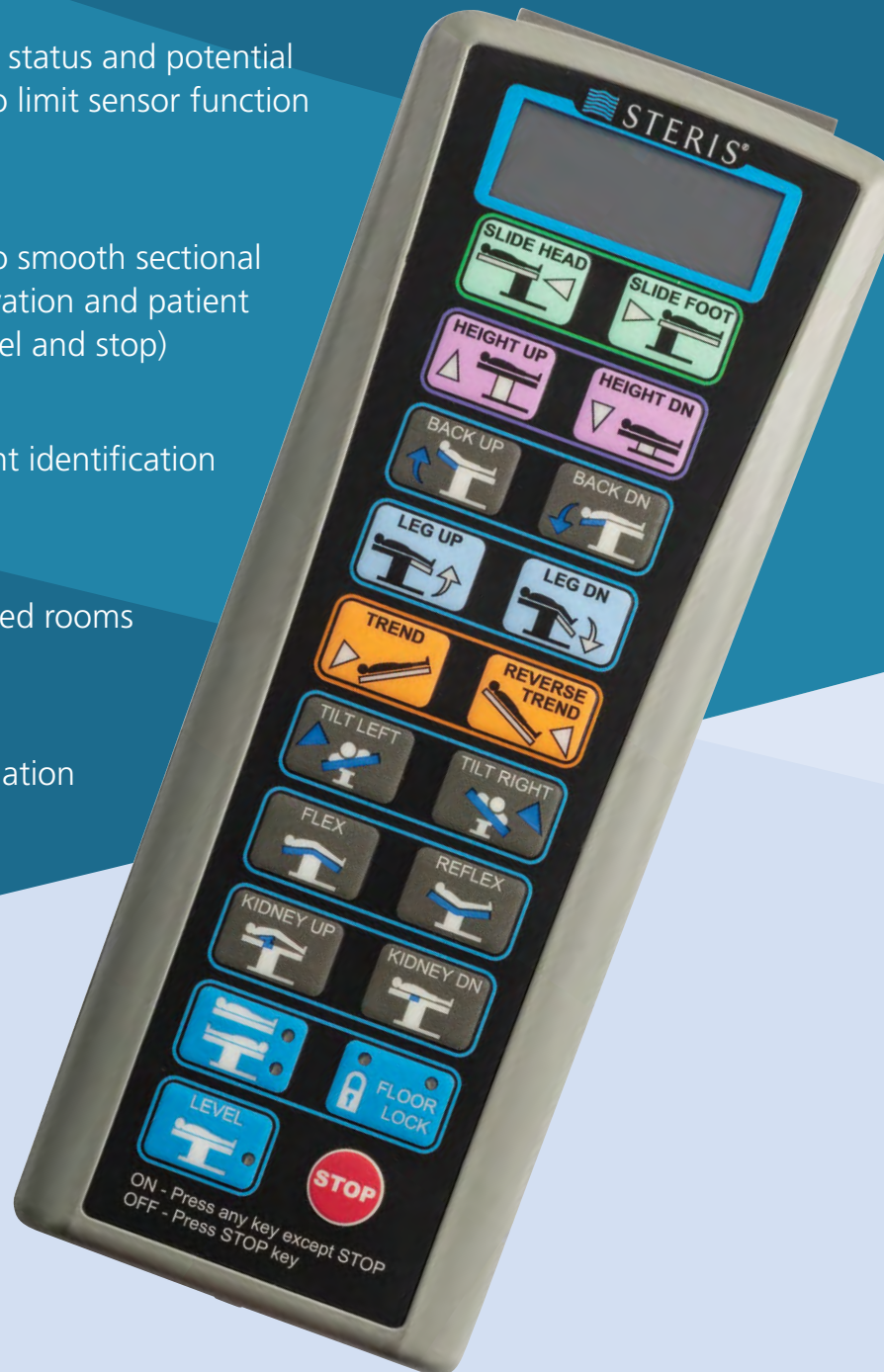


# Improving anesthesia care

## Intelligent control

An intuitive hand control puts patient posturing at your fingertips. With an ergonomic design and easy-to-read LCD display, it communicates instantaneous table positioning data...without lifting the sterile drape. Auto-collision safeguards are also in place to protect the table.

- **LCD** provides information on basic patient status and potential table section interference through the auto limit sensor function and service diagnostics
- **Dedicated buttons** offer instant access to smooth sectional articulation, return-to-level, floor lock activation and patient positioning (Trendelenburg, height, tilt, level and stop)
- **Colored buttons** offer quick and confident identification of the most frequently used functions
- **Backlit screen** for clear viewing in darkened rooms
- **Auto-collision sensors** will stop sectional collisions and suggest an alternative articulation



# Airway management

The STERIS 5095 General Surgical Table features a Dual-Articulating Headrest that enables more versatile positioning for anesthesia providers. Tilt & height capability of the headrest facilitates improved patent airway management and simplifies lateral patient positioning.



# Quick, safe patient positioning



## Lighten your workload

### Featherweight Leg Section

- Modular, available in two lengths, 18 or 24-inch removable leg section
- Carbon fiber construction makes it strong and ideal for imaging
- Surpasses AORN guidelines for repeated lifting in the OR at only 14 lbs
- Articulate the leg section down to  $-105^{\circ}$ , enabling you to leave the leg section attached during the procedure
- Low position of 26 inches improves the ease and ergonomics of procedures by achieving a low height for a more comfortable position, especially when seated







## Patient positioning is vital to a safe and effective surgical procedure.

Proper patient positioning depends on the type and length of procedure, anesthesia access to the patient, devices required and other factors. Safely positioning the patient is a team effort. All members of the surgical team play a significant role in the process and share responsibility for establishing and maintaining the correct patient positions.<sup>1,2</sup>



## Infection prevention

There are many measures that are taken to prevent contamination in the surgical suite. This is a key factor in the design of STERIS Surgical Tables.

### Flush side rails

Absence of exposed screws promotes contamination prevention measures



### Mushroom cap

Unique table pad attachment for easy cleaning (contains no VELCRO® Brand fastener)



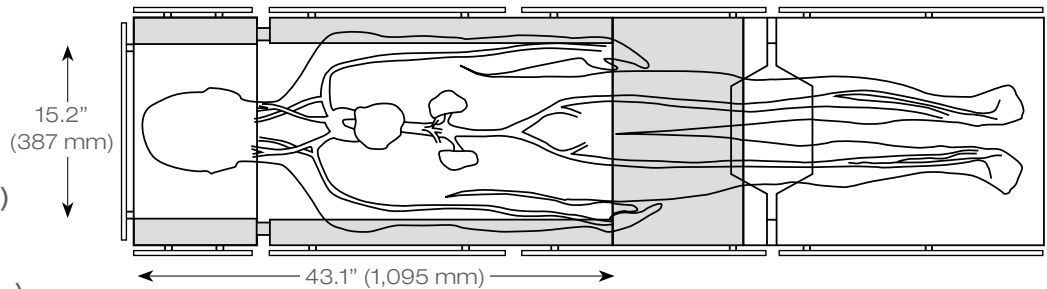
# Large imaging area

## Upper Body IA Coverage – Normal Patient Orientation

### Table Slid to Head

5095 General Surgical  
Table Imaging Length:

- Width: 15.2" (387 mm)
- Length: 43.1" (1,095 mm)
- Total imaging area:  
656.8 sq. in. (4,238 sq. cm.)



#### Common Uses:

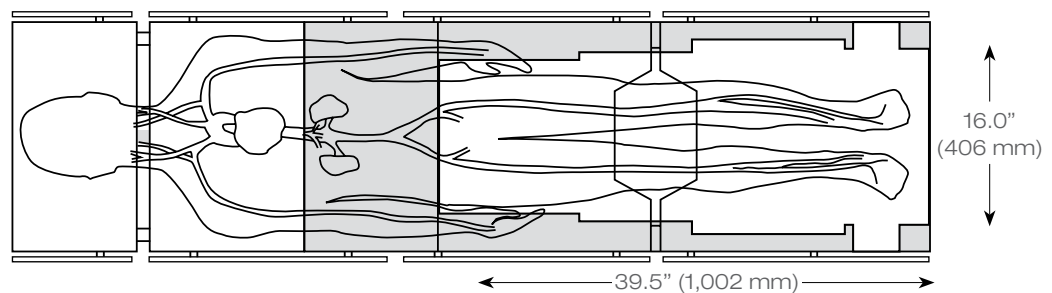
- Pacemaker insertions
- Hickman catheters
- Broviac insertions
- Shunts
- IVC filters
- Cholangiography
- Lung biopsies
- Thoracic and kidney
- Gall bladder
- Total hip revision
- Ophthalmic
- Neurosurgery
- Spinal
- Implantable defibrillation
- Endoscopy

## Lower Body IA Coverage

### Table Slid to Foot

5095 General Surgical  
Table Imaging Length:

- Width: 16.0" (406 mm)
- Length: 39.5" (1,002 mm)
- Total imaging area:  
630.6 sq. in. (4,068 sq. cm.)

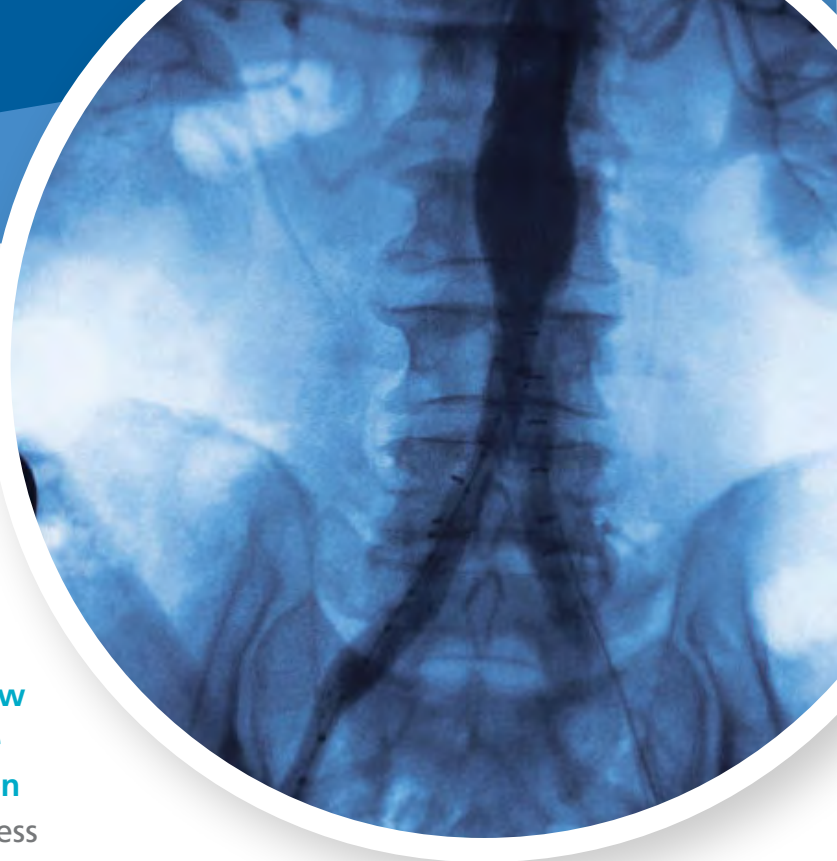


#### Common Uses:

- Lower body arterial imaging
- Lower limb, non-traction orthopedics
- Femoral/popliteal bypass
- Laser angioplasty

# Superior C-arm access

The **STERIS 5095 General Surgical Table's** narrow column, radiolucent table top and superb slide provide one of the largest imaging windows on the market today. That means outstanding access for the C-arm and surgical team...without time-consuming patient reorientation. The generous imaging area permits clear, high quality images crucial to today's MIS, cardiothoracic, orthopedic and neurosurgical procedures.





# STERIS 5095 General Surgical Table

## Technical specifications

### A product family built on efficiency, quality and productivity

From versatile ambulatory surgery centers, to state-of-the-art robotic suites, STERIS offers a table for every modern OR need. Backed by the industry's most comprehensive support network, each table delivers exceptional safety, quality and productivity, assuring the very best return on your table investment.

Features	5095 General Surgical Table
Table Length	81" (2,057 mm)
Table Width	20" (508 mm) (28" with extenders)
Table Height Range	22.8" to 42.5" (581 to 1080 mm)
Tabletop Slide Range	9" (227 mm) to head, 9" to foot
Table Shipping Weight	825 lbs. (374 kg)
Trendelenburg / Reverse	30° / 30°
Lateral Tilt (left/right)	20° / 20°
Head Section	+90° to -90° (15° increments)
Back Section	+82° to -40° (reverse)
Leg Section	0° to -105°
Flex/Reflex	140° / 98°
Manual Override	Yes
Perineal Cut-out	Yes
Kidney Elevator	4" (102 mm) powered

#### Patient Weight Capacity

1,200 lb. (544 kg) patient support, including raise/lower (when centered on the column in Normal Orientation)

900 lb. (408 kg) full table articulation (when centered on the column in Normal Orientation)

600 lb. (272 kg) full table articulation, including slide

For more information, contact your STERIS representative or visit **[www.steris.com](http://www.steris.com)**

1 Phillips, N. F. (2004). Berry & Kohn's operating room technique (10th ed.). St. Louis, MO: Mosby; St-Arnaud, D., & Paquin, M. (2008). Safe Positioning for Neurosurgical Patients. AORN Journal, 87 (6), 1156-1172. doi:10.1016/j.aorn.2008.03.004  
2 Guideline for positioning the patient. (2017). AORN Journal, 105 (4), P8-P10. doi:10.1016/s0001-2092(17)30237-5

Document #M10669EN.2020-09, Rev. A  
©2020 STERIS  
All rights reserved.

VELCRO® is a registered trademark of Velcro BVBA. Used with permission.



5960 Heisley Road  
Mentor, OH 44060-1834 • USA  
440-354-2600 • 800-548-4873  
[www.steris.com](http://www.steris.com)