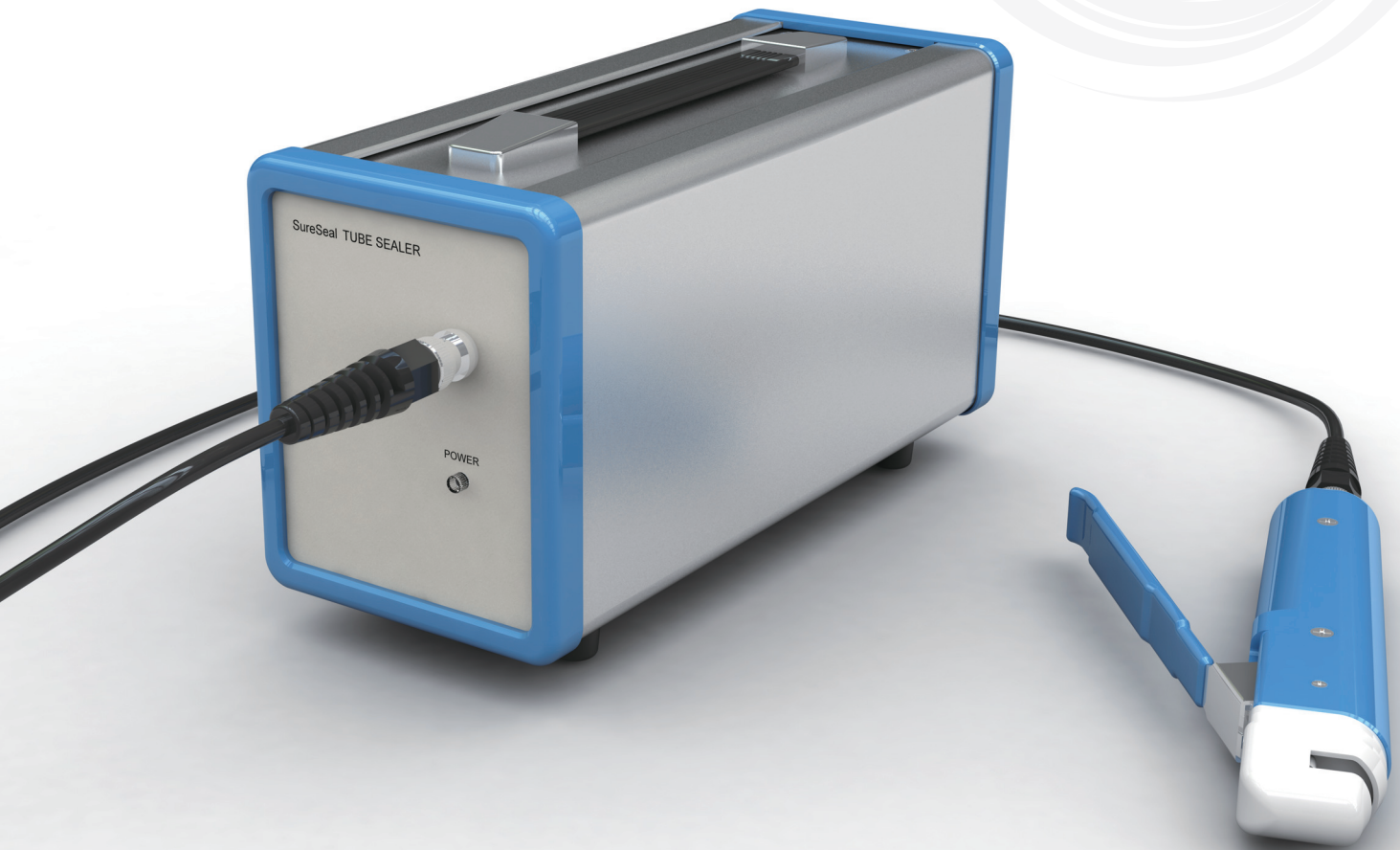


Don't just seal, SURESEAL



CENTRON

SureSeal™ SE450

TUBE SEALER

All-round hand unit tube sealer

SureSeal™ SE450 is a compact and lightweight tube sealer with a hand unit. The machine is suitable for use where work space is limited or where one tube sealer machine will be shared by multiple users

■ Features

- AC-powered, with handheld sealing unit
- Ergonomic design with standard 1.8 meters (6 ft) cable
- Seals wide range of blood bag tubing - good for tubing diameter 2-6 mm (1/4")
- Fast sealing in one second / No warm-up required
- Makes seals with a notch at the center for easy segmenting of tubing
- Head protector is detachable for sealing head cleaning
- Suitable at blood collection sites or laboratories where multiple users should share a machine

Centron

Smart Solutions for Smarter Bloodbanking

Main unit

- The machine is suitable for use where work space is limited or where one tube sealer machine will be shared by multiple users. When the trigger lever is pulled, the machine generates strong high-frequency power to melt thermoplastic tubing. It makes a seal on tubing in 1-2 seconds.

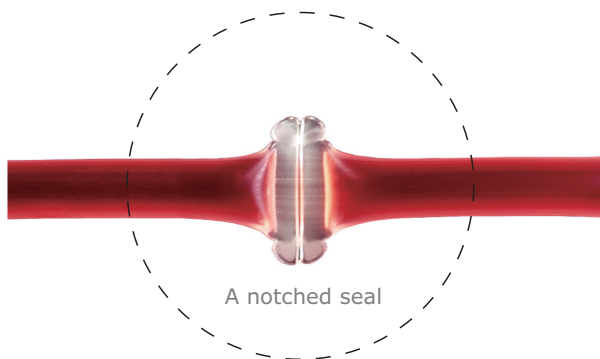


RF cable connector
- Connect the RF cable between this connector and the same connector on the hand unit.

Power indication lamp
- The green LED lamp lights when the power switch is on.

Sealing hand unit

- Additional plug-in type *SureSeal*™ sealing hand unit
- Ergonomic design with standard 1.8m (6ft) cable
- Satisfying various operating conditions



Specification

Product	TUBE SEALER
Model	SE450
Power	220-240V~ 50/60Hz 250W
Protection	FUSE, 2A/250V~
Dimension	Main unit: 106(W)mm/206(L)mm/150(H)mm
	Head unit: 28(W)mm/204(L)mm/44(H)mm

Information



DISTRIBUTOR

Centron Centron Corporation

Address: 44 Beolmal-ro, Dongan-gu, Anyang, Gyeonggi-do, Postal Code 431-804 / Republic of Korea
Phone: +82-31-422-7890 / **Fax:** +82-31-422-7866
E-mail: info@centrons.com
Website: www.centrons.com



※ The specification and design are subject to change without prior notice for product upgrades.

Don't just seal, SURESEAL



CENTRON

SureSeal[™] SE700

TUBE SEALER

Pack-n-go safe

SureSeal[™]SE700 is a lightweight portable machine with a hand unit.

■ Features

UPGRADE
HI-POWER

New Hi-power Battery pack is (rechargeable and replaceable) with high efficiency connector.

- With a new battery a sealer can make between 1100 and 1500 seals
- Battery-powered, compact and lightweight.
- Seals at handheld sealing unit.
- Sealing unit cable is 1.8 meters (6 feet) long.
- Seals wide range of blood bag tubing - good for tubing diameter 2-6 mm (1/4").
- Fast sealing in one second. No warm-up required.
- Makes seals with a notch at the center for easy segmenting of tubing.
- Head protector is detachable for sealing head cleaning.
- Canvas carrying bag is included. The bag carries all parts.
- Lightweight, battery operation and carrying bag - an ideal device for mobile use.
- Battery charger is built-in in the unit.

Centron

Smart Solutions for Smarter Bloodbanking

Control panel

- Indication lamps on the front panel indicate available battery charge and charging status. For stable and continuous operation, it is recommended that the battery pack should be recharged when two or more indication lamps are lighting. Recharging to full capacity may take 6 hours.



Battery charge level lamps

- The five green LED lamps indicate battery charge level stored in the battery pack inside. Each lamp denotes about 20 % of full charge capacity of the battery.

Charging status lamp

- The yellow LED lamp is turned on when the charger unit plug is plugged into the charging jack. The lamp flashes when charge level reaches to full charge.

Sealing lamp

- The red LED lamp indicates RF power is being generated and applied to the hand unit. The lamp is turned on by pulling the trigger level, and is turned off automatically when a seal is made at tubing, or in 3 seconds after.

Sealing hand unit & Carrying bag

- Additional plug-in type *SureSeal*™ sealing hand unit
- Ergonomic design with standard 1.8m (6ft) cable
- Satisfying various operating conditions
- The carrying bag houses all parts



Specification

Product	TUBE SEALER
Model	SE700
Power	18V $\overline{\text{---}}$ 1A + $\overline{\text{---}}$
Adapter	100-240V~ 50/60Hz 0.5A
Dimension	Main unit: 148(W)mm/226(L)mm/34(H)mm
	Head unit: 28(W)mm/204(L)mm/44(H)mm

Information



DISTRIBUTOR

Centron Centron Corporation

Address: 44 Beolmal-ro, Dongan-gu, Anyang, Gyeonggi-do,
Postal Code 431-804 / Republic of Korea
Phone: +82-31-422-7890 / **Fax:** +82-31-422-7866
E-mail: info@centrons.com
Website: www.centrons.com



※ The specification and design are subject to change without prior notice for product upgrades.

Don't just seal, SURESEAL



CENTRON

SureSeal™ SE160

TUBE SEALER

Versatility comes in standard

SureSeal™ SE160 is designed in consideration of multi tube sealing environment. It provides an ideal space-efficient solution.

■ Features

- Premium sealing quality - new wide sealing technology
- Multi tube sealer set up - automatic sequential sealing
- Variable sealing spacing: 70, 75, 80, 85, 90 mm (or, any distance up to 200 mm upon request)
- Simple operation, fast sealing, no warm-up required
- Sealing hand unit ready
- Automatic tubing detection
- LED indicator to show sealing progress
- Applicable to wide range of blood bag tubing
- Head protector / Splash guard for user safety

Centron

Smart Solutions for Smarter Bloodbanking

New state-of-the-art sealing head

- New sealing technology ensures safe sealing of even thick and sensitive tubings with wide sealed surface.
- Sealing will automatically start when tubing is placed in the sealing head.
- Head protector for safe and easy operation (detachable, easy to clean)
- Applicable tubing diameter 2-6 mm (1/4")



Splashguard

- protects users from accidental blood splash
- Detachable, easy to clean

Indication lamp

- shows sealing progress



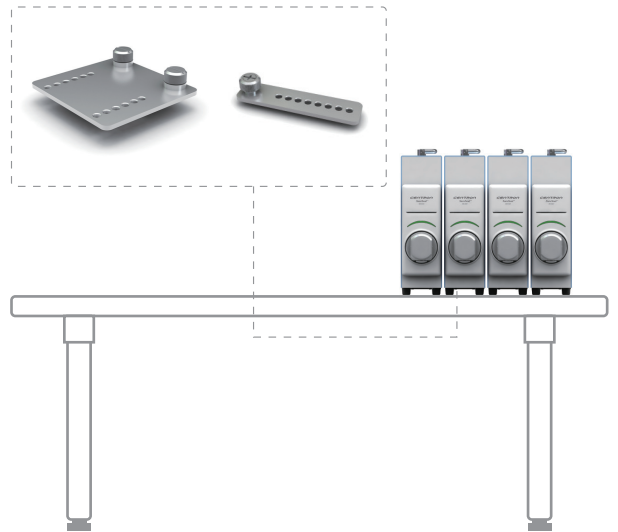
Wide sealed surface with notch at the center

- Reliable sealing quality prevents leakage
- Easy to segment



Multi tube sealing setup example

- Linkage bars are provided for easy multi sealing head unit installation.
- Sealing hand unit can be attached at any main unit.



Specification

Product	TUBE SEALER
Model	SE160
Main Power	100-240V~ 50/60Hz 200W
Dimension	Main unit: 69(W)mm/350(L)mm/245(H)mm
	Hand unit: 28(W)mm/204(L)mm/44(H)mm

Information



DISTRIBUTOR



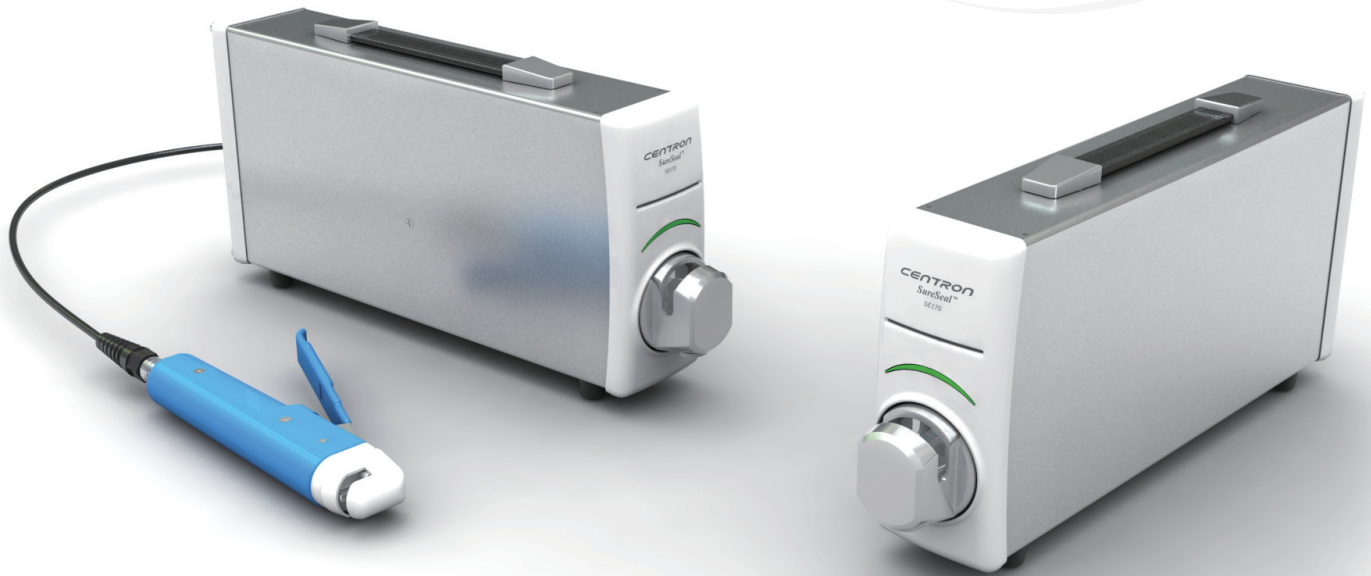
Centron Centron Corporation

Address: 44 Beolmal-ro, Dongan-gu, Anyang, Gyeonggi-do,
Postal Code 431-804 / Republic of Korea
Phone: +82-31-422-7890 / **Fax:** +82-31-422-7866
E-mail: info@centrons.com
Website: www.centrons.com



※ The specification and design are subject to change without prior notice for product upgrades.

Don't just seal, SURESEAL



CENTRON

***SureSeal*™ SE170**

TUBE SEALER

The most compact one. It's an Innovation of Tube Sealer

SureSeal™ SE170 is designed in consideration of both single benchtop use and multiple-point tube sealing environment. It provides an ideal space-efficient solution.

■ **Features**

- Premium sealing quality - new wide sealing technology
- Multi tube sealer set up - automatic sequential sealing
- Variable sealing spacing: 65, 70, 75, 80, 85, 90, 95, 100 mm (or, any distance up to 200 mm upon request)
- Simple operation, fast sealing, no warm-up required
- Sealing hand unit ready
- Automatic tubing detection
- Arc detection alarm
- LED indicator to show sealing progress and alarms
- Applicable to wide range of blood bag tubing
- Head protector / Splash guard for user safety

Centron

Smart Solutions for Smarter Bloodbanking

New state-of-the-art sealing head

- New sealing technology ensures safe sealing of even thick and sensitive tubings with wide sealed surface.
- Sealing will automatically start when tubing is placed in the sealing head.
- Head protector for safe and easy operation (detachable, easy to clean)
- Applicable tubing diameter 2-6 mm (1/4")

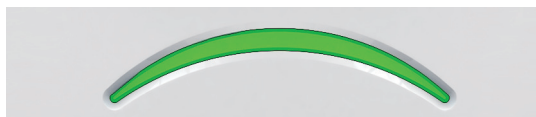


Splashguard

- protects users from accidental blood splash
- Detachable, easy to clean

Indication lamp

- shows sealing progress



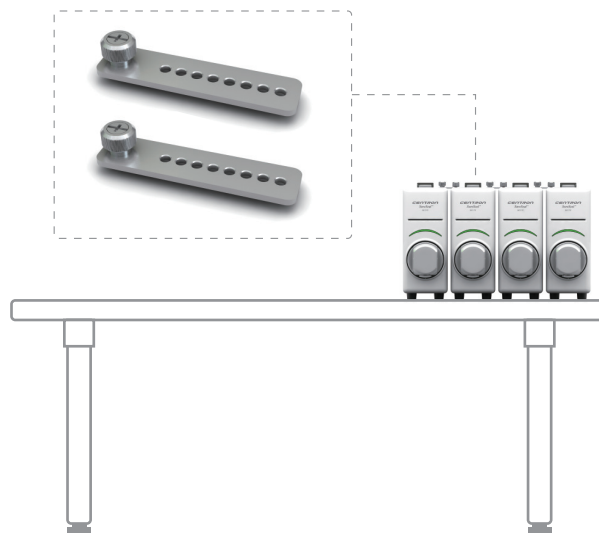
Wide sealed surface with notch at the center

- Reliable sealing quality prevents leakage
- Easy to segment



Multi tube sealing setup example

- Linkage bars are provided for easy multi sealing head unit installation.
- Sealing hand unit can be attached at any main unit.



Specification

Product	TUBE SEALER
Model	SE170
Main Power	100-250V~ 50/60Hz 250W
Dimension	Main unit: 65(W)mm/365(L)mm/167(H)mm
	Hand unit: 28(W)mm/204(L)mm/44(H)mm

Information



DISTRIBUTOR

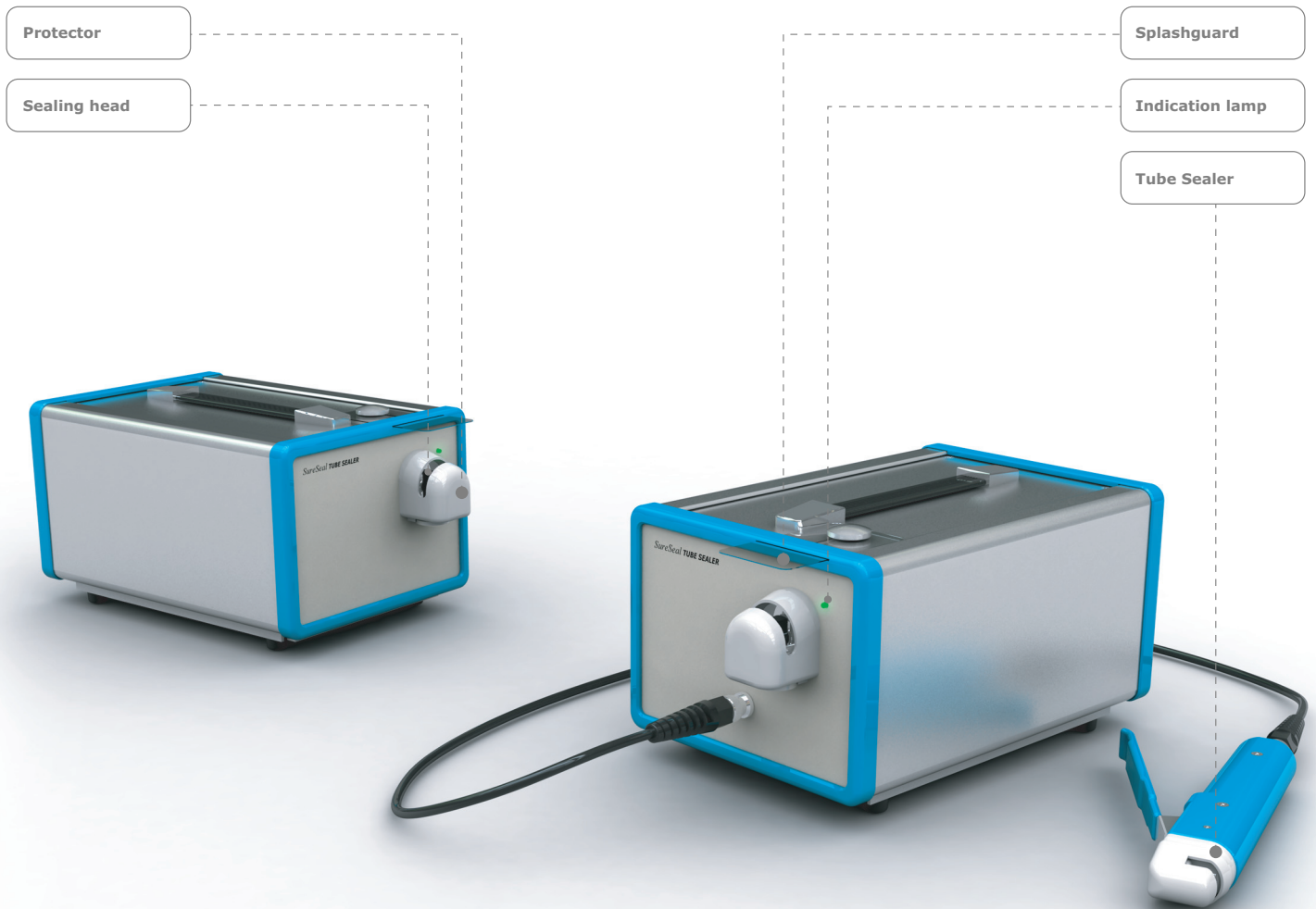


Centron Centron Corporation

Address: 44 Beolmal-ro, Dongan-gu, Anyang, Gyeonggi-do,
Postal Code 431-804 / Republic of Korea
Phone: +82-31-422-7890 / **Fax:** +82-31-422-7866
E-mail: info@centrons.com
Website: www.centrons.com



※ The specification and design are subject to change without prior notice for product upgrades.



Smart Solutions for Smarter Bloodbanking

SureSeal[™] SE250/SE250H TUBE SEALER

■ Features

- AC-powered, integrated sealing head - suitable for bench-top use
- Seals wide range of blood bag tubing - good for tubing diameter 2-6 mm (1/4")
- Fast sealing in one second. No warm-up required
- Makes a notch at the center of seal - easier for segmenting
- Starts working when tubing is placed in the sealing head
- Designed for high volume workload
- Head protector warrants safe and easy operation. Detachable for head cleaning
- Splashguard included for protection of users from accidental blood splash



CENTRON
SureSeal™ SE250/SE250H
 TUBE SEALER

Optional Chart

	Selective Item	Including	Note
Unit Configuration	• SE250	<ul style="list-style-type: none"> • SE250 Main Unit • Power cord • User's Manual • Spare fuses • Spare splashguards 	
	• SE250H	<ul style="list-style-type: none"> • SE250 Main Unit • Tube Sealer hand unit • Power cord • User's Manual • Spare fuses • Spare splashguards 	

Specification

Product	TUBE SEALER
Model	SE250/ SE250H
Power	220-240V~ 50/60Hz 250W
Protection	FUSE, 2A/250V~
Dimension	173(W)mm/259(L)mm/148(H)mm

* For more information, please visit our website.

Centron Centron Corporation

Address: 44 Beolmal-ro, Dongan-gu, Anyang, Gyeonggi-do, 431-804 Korea
Phone: +82-31-422-7890 / **Fax:** +82-31-422-7866
E-mail: info@centrons.com
Website: www.centrons.com



* The specification and design are subject to change without prior notice for product upgrades.

Don't just seal, SURESEAL



CENTRON

SureSeal™ SE260

TUBE SEALER

The professional choice for heavy-duty tube sealing

SureSeal™SE260 is AC powered benchtop tube sealer with integrated sealing head and optional sealing hand unit. New sealing technology and enforced reliability make SE260 ideal for most demanding environments.

■ Features

- Premium sealing quality
- Simple operation, fast sealing, no warm-up required
- Sealing hand unit ready
- Automatic tubing detection
- LED indicator to show sealing progress
- Applicable to wide range of blood bag tubing
- Head protector / Splash guard for user safety

Centron

Smart Solutions for Smarter Bloodbanking

New state-of-the-art sealing head

- New sealing technology ensures safe sealing of even thick and sensitive tubings with wide sealed surface.
- With automatic tubing detection, sealing will automatically start when tubing is placed in the sealing head.
- Head protector for safe and easy operation (detachable, easy to clean)
- Applicable tubing diameter 2-6 mm (1/4")



Splashguard

- protects users from accidental blood splash
- Detachable, easy to clean

Indication lamp

- shows sealing progress



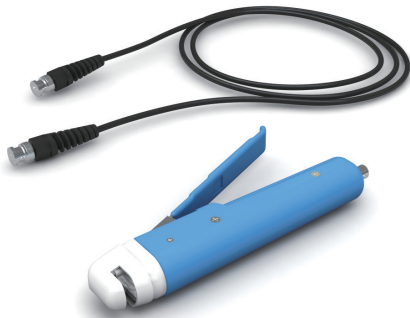
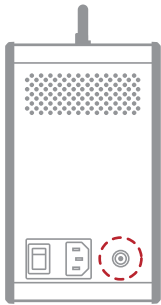
Wide sealed surface with notch at the center

- Reliable sealing quality prevents leakage
- Easy to segment



Sealing hand unit ready

- Additional plug-in type SureSeal™ sealing hand unit
- Ergonomic design with standard 1.8m (6ft) cable
- Satisfying various operating conditions



Specification

Product	TUBE SEALER
Model	SE260
Power	100-240V~ 50/60Hz 250W
Dimension	Main unit: 123(W)mm/302(L)mm/243(H)mm
	Hand unit: 28(W)mm/204(L)mm/44(H)mm

Information



DISTRIBUTOR

Centron Corporation

Address: 44 Beolmal-ro, Dongan-gu, Anyang, Gyeonggi-do,
Postal Code 431-804 / Republic of Korea
Phone: +82-31-422-7890 / Fax: +82-31-422-7866
E-mail: info@centrons.com
Website: www.centrons.com



* The specification and design are subject to change without prior notice for product upgrades.