



CENTRON

AccuMix[™] **CM745**

BLOOD COLLECTION MIXER

Centron

Smart Solutions for Smarter Bloodbanking



Smart blood collection for everyone

*AccuMix*TM CM745

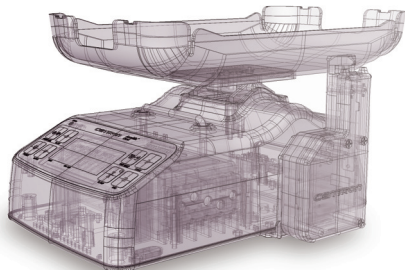
BLOOD COLLECTION MIXER

■ Features

- Perfect cost-efficient solution
- Proven accurate weighing and mixing technology
- Simple weight calibration in digital method
- Large capacity Li-ion battery for portable use
- Emergency onboard battery
- Visual/audible alarms
- Barcode scanner for label checking
- Canvas carrying bag

Refined simplicity meets robustness

- Just plug-in, switch-on and you're ready to go.
- Understanding user work flow and demands, CM745 has intuitive user interface and easy-to-follow set up menus.
- Our reliable weighing and mixing mechanism are protected by solid engineering grade plastic featuring enhanced shock resistance and long-lasting durability. Compact size based on optimized weight distribution makes CM745 the perfect fit for anywhere.



Interchangeable clamping module

- Clamping module clamps blood bag tubing when collected blood volume reaches user-selected preset volume. Also clamping module is detachable, so this can be mounted either left or right for user convenience.



Clear LCD Screen & Target Volume Display

- Ergonomically located LCD is backlit and easy to read in bright indoor. LCD screen displays collected blood volume, preset volume to collect, total weight of collected blood and blood bags, elapsed time of donation and alarm symbols.
- Target volume display shows preset target volume.



Adjustable operational parameters & various visual/audible alarms

- Collection target volume, alarm triggering criteria, beep sound on/off and tray rocking speed are user adjustable.
- Alarm lamp flashing is visible from a distance.



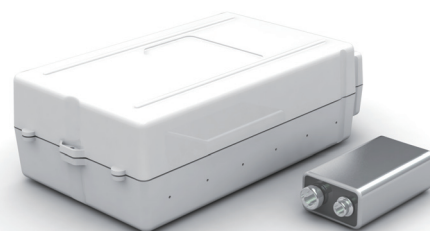
Barcode scanner

- Barcode scanner for label checking
- Barcode scanner reads most standard barcode labels including blood bank-specified ISBT128 code.



Dual Battery System

- Onboard battery (rechargeable) is for emergency backup. In case of unexpected AC power failure, it guarantees supplying power for 20 more minutes to safely complete ongoing collection. No need to use BL101 battery pack all the time in case of AC powered indoor use.
- For portable or outdoor use, newly designed Li-ion large capacity BL101 battery pack (rechargeable & replaceable) is available. BL101 battery pack supports up to 15 hours of operation without AC mains.
- BL101 battery pack is charged in the main unit or in the BC110 battery charger.





CENTRON

AccuMix™ CM745

BLOOD COLLECTION MIXER

Optional Chart

	Selective Item	Note
Optional items	• BL101 battery pack	• Large capacity Li-ion battery (rechargeable & replaceable) supports up to 15 hours of operation
	• BC110 battery charger	• For charging BL101 battery pack
	• Barcode scanner	• For label checking
	• Canvas carrying bag	• Light weight durable canvas bag for transportation and storage
	• Carrying case	• Hard case for transportation and storage
	• Large tray	• supports all types of blood bag in the market
	• Sample tube holder	• Holds up to 2 sample tubes / Detachable & interchangeable
	• 500g weight	• Precise standard weight for weight calibration

※ For more information about the product and package customization, please visit our website.

Specification

Product	Blood Collection Mixer
Model	CM745
Power	18V \sim 1.67A + \oplus \ominus
Adapter	100-240V \sim 50/60Hz 0.8A
Dimension	190(W)mm/290(L)mm/158(H)mm

Information



DISTRIBUTOR

Centron Centron Corporation

Address: 44 Beolmal-ro, Dongan-gu, Anyang, Gyeonggi-do,
Postal Code 431-804 / Republic of Korea
Phone: +82-31-422-7890 / **Fax:** +82-31-422-7866
E-mail: info@centrons.com
Website: www.centrons.com



※ The specification and design are subject to change without prior notice for product upgrades.

The global standard for automated blood collection mixer



CENTRON

AccuMix[™] CM735A

BLOOD COLLECTION MIXER

■ Features

- Automatically clamps blood bag tubing when collected blood volume reaches preset volume. Preset volume is user-selectable.
- Rocks to mix collected blood with anticoagulant in the blood bag.
- LCD panel displays collected blood volume, preset volume to collect, total weight of collected blood and blood bags, elapsed time of donation and alarm symbols.
- Audible and visual alarm signals at the end of collection, at abnormal blood flow and at low battery condition.
- Large tray. Up to quadruple blood bags can be used.
- Automatically tares weight of blood bags to measure net volume of collected blood.
- Clamping module is detachable, so can be mounted either left side or right side.
- Fully portable with a rechargeable and replaceable battery pack.
- Both built-in charger and a separate charger unit included.
- Canvas carrying bag included.
- Lightweight, battery operation, carrying bag - a convenient machine for mobile units.

Centron

Smart Solutions for Smarter Bloodbanking

Interchangeable clamping module

- Clamping module clamps blood bag tubing when collected blood volume reaches user-selected preset volume. Also clamping module is detachable, so this can be mounted either left or right for user convenience.

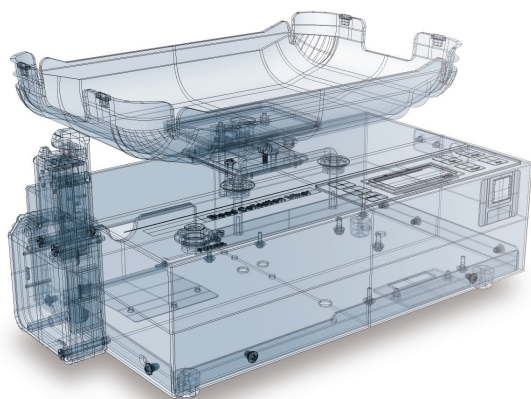


Control Panel



Refined simplicity meets robustness

- Just plug-in, switch-on and you're ready to go.
- Understanding user work flow and demands, CM735 has intuitive user interface and easy-to-follow set up menus.
- Our reliable weighing and mixing mechanism are protected by solid engineering grade featuring enhanced shock resistance and long-lasting durability. Compact size based on optimized weight distribution makes CM735 the perfect fit for anywhere.



Battery and Battery Charger

- CM735 can be powered by either a battery pack or an AC power adaptor. A Nickel-Cadmium battery pack of 12 Volts/2AH capacity is used. It is replaceable and rechargeable. An audible alarm sounds when battery voltage drops to its lower limit. The battery can be recharged while in the mixer or with a separate battery charger unit.



Replaceable battery pack



built-in charger and separate charger unit

Specification

Product	BLOOD COLLECTION MIXER
Model	CM735A
Power	18V \equiv 1.0A + \oplus -
Adapter	100-240V~ 50/60Hz 0.5A
Dimension	203(W)mm/292(L)mm/140(H)mm

Information



DISTRIBUTOR

Centron Centron Corporation

Address: 44 Beolmal-ro, Dongan-gu, Anyang, Gyeonggi-do,
Postal Code 431-804 / Republic of Korea
Phone: +82-31-422-7890 / **Fax:** +82-31-422-7866
E-mail: info@centrons.com
Website: www.centrons.com



※ The specification and design are subject to change without prior notice for product upgrades.



CENTRON

AccuMix™ CM750

DATA COLLECTION MIXER

■ Features

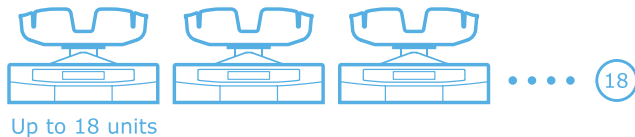
- Accurate weighing and mixing of collected blood
- Wireless data transfer (CDM software)
- Versatile configuration
- Interchangeable clamping module
- Barcode scanner
- Large capacity battery pack for portable use
- Anti-scratch robust engineering plastic housing
- Visual/audible alarms
- High User Customizability
- Adjustable operational parameters & various visual/audible alarms

Centron

Smart Solutions for Smarter Bloodbanking

Smart Data Management System

- The device is fully stand-alone, and provides all functions by itself. And furthermore, with use of the software "Collection Data Manager (CDM)", up to 18 units of CM750 can be configured in a wireless network called 'CDM Network Group'.
- The CM750 contains a wireless link board, but the CDM module to be used with the network computer should be ordered additionally. The CDM software is supplied free of charge.



Up to 18 units



Interchangeable Clamping Module

- Clamping module clamps blood bag tubing when collected blood volume reaches user-selected preset volume. Also clamping module is detachable, so this can be mounted either left or right for user convenience.



Large Capacity Battery

- For portable or outdoor use, the large capacity BN126A battery pack (rechargeable & replaceable) is available. The pack supports up to 10 hours of operation without AC mains.
- BN126A battery pack is charged through the main unit or BC163 fast battery charger.



Barcode Scanner

- Barcode scanners read most of standard barcode labels including blood bank-specified ISBT128 code.
- Centron R&D Lab is ready for customized solution.



Specification

Product	DATA COLLECTION MIXER
Model	CM750
Power	18V \sim 1.67A + \ominus -
Adapter	100-240V \sim 50/60Hz 0.8A
Dimension	335(W)mm/210(L)mm/184(H)mm

Information



DISTRIBUTOR

Centron Centron Corporation

Address: 44 Beolmal-ro, Dongan-gu, Anyang, Gyeonggi-do,
Postal Code 431-804 / Republic of Korea
Phone: +82-31-422-7890 / **Fax:** +82-31-422-7866
E-mail: info@centrons.com
Website: www.centrons.com



※ The specification and design are subject to change without prior notice for product upgrades.



CENTRON

AccuMix[™] **CM760**

DATA COLLECTION MIXER

Centron

Smart Solutions for Smarter Bloodbanking



Redefining the standards

AccuMix[™] CM760

DATA COLLECTION MIXER

■ Features

- Accurate weighing and mixing of collected blood
- 5-inch LCD screen with user-friendly interface
- Visual/audible alarms with voice guide
- Multi-functional remote control unit
- Dual barcode scanner system
- Wireless data transfer (CDM software)
- Emergency onboard battery
- Large capacity battery pack for portable use
- *SureSeal*[™] tube sealer integration ready
- Secured stackable storage - Carrying Case Pro
- Versatile configuration

Multi-functional remote control unit

- shows % indication of collection progress
- Main panel buttons are located
- Easy access, no more hunching up the back

Dual barcode scanner system

- recognizes all standard barcode labels including ISBT128 (Customization available)
- Secondary scanner at the front of unit

Sealing hand unit

- SureSeal™ tube sealer module can be integrated

5-inch large LCD

- Clear backlit screen
- User-friendly graphic interface

State-of-the-art technology

- Precise weighing and mixing accuracy
- Customizable operational parameters
- Ergonomic design

Standard large tray

- supports all types of bloodbag in the market
- Easy to clean, easy to handle

Sample tube holders

- hold up to 6 sample tubes

Carrying Case Pro

- Robust stackable case
- Batteries can be recharged with the case closed
- "Carry & Set up" as collection stand

Emergency onboard battery

- guarantees completing ongoing collection for 30 more minutes in case of abrupt AC failure

Intelligent voice guide (Multiple languages)

- announces collection progress and alarms

Internal device memory

- saves up to 1,000 donor data, each consists of 30 information fields

USB memory stick

- Data can be moved via USB memory stick

Wireless data transfer (CDM Software)

- Simple / reliable / secured data communication with up to 18 devices by one CDM software installed PC
- General spreadsheet file format (.csv) & .txt for system integration
- Simultaneous setting change available for all devices in network

* shown in full configuration (CM760 Expansion)

One for All, All for One

Multi-functional Remote Control Unit

- 10 LED lamps indicate % progress of collection and alarms. The lamps flash in case of alarming.
- Main operation buttons (CLAMP/START/END/ENTER) on the unit enhance user convenience.
- Secondary barcode scanner is equipped at the front.



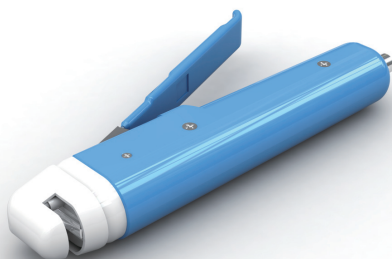
Dual Barcode Scanner System

- Barcode scanners read most of standard barcode labels including blood bank-specified ISBT128 code.
- Centron R&D Lab is ready for customized solutions.



SureSeal™ Tube Sealer Integration

- SureSeal™ tube sealer module can be installed in the main unit. By plugging in a sealing hand unit, CM760 is ready to offer the highest level of versatility.



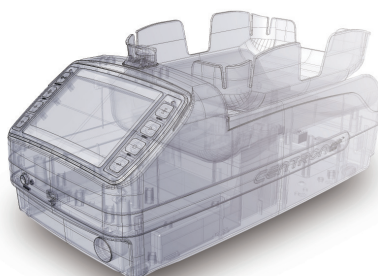
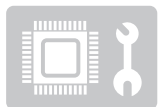
Dual Battery System

- Onboard battery (rechargeable) is for emergency backup. In case of unexpected AC power failure, it guarantees saving all donor data and supplies power for 30 more minutes to complete ongoing collection cycle. No need to use BN128 battery pack all the time in case of AC powered indoor uses.
- For portable or outdoor use, the large capacity BN128 battery pack (rechargeable & replaceable) is available. The pack supports up to 8 hours of operation without AC mains.
- BN128 battery pack is charged through the main unit or BC164 fast battery charger.



High User Customizability

- CM760 is designed to satisfy various operating conditions in professional demands. Users can adjust most operational setting including target collection volumes, alarm levels and on/off, tray moving speed and even specific gravity of blood.
- Centron R&D Lab offers customization support to meet your specific operation requirements.



Intelligent Voice Guide

- Voice guide system speaks real-time information including selected target volume, collection start, collection end and alarm conditions.
- 10 selectable languages:
 - English, Spanish, French, German, Portuguese, Italian, Russian, Chinese, Korean and Japanese



■ 5-inch LCD Screen

- Clear backlit LCD display helps users following instructions and monitoring data. Display contains all necessary information for user convenience.



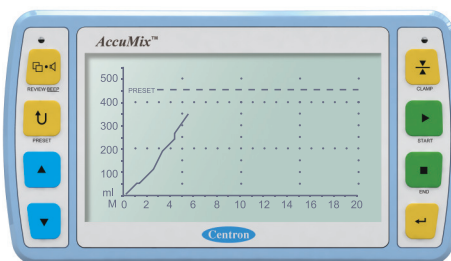
■ User-friendly Interface

- Collection processes are represented with graphic symbols.
- Users can change settings depending upon requirements with passwords.



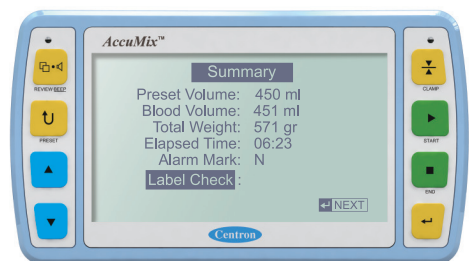
During Collection

- Collected blood volume
- Target blood volume
- Total weight
- Collection elapsed time
- Blood flow rate and alarm
- Collection progress bar



Collected volume curve

- presents collected blood volume vs elapsed time
- Curve slope gives a quick view of collection flow rate

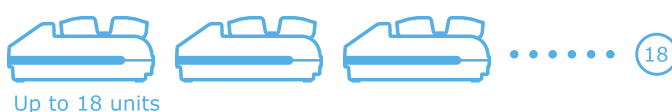


Data summary and review

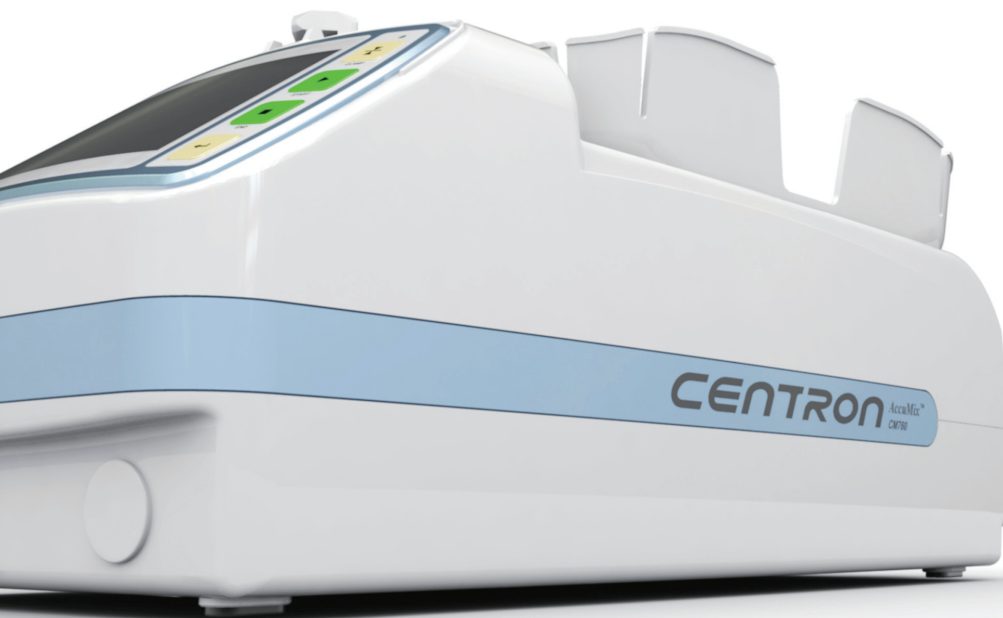
- shows donor data summary at the end of collection cycle
- scrolls all data saved in the internal device memory

■ Smart Data Management System

- All the collection data including up to 1,000 donor information are saved in the internal device memory of CM760 main unit. Each data consists of 30 information fields.
- Data can be transferred by a USB memory stick or via wireless data link (CDM).
- One CDM network can group 18 units. A supervisor can monitor and control real-time operation of up to 18 units. Donor data, collection data, alarm status, device settings are real-time managed by a computer.
- Data format is available in .txt (text file) and .csv (general spreadsheet file). Users can manage data with a spreadsheet program. Microsoft Excel® is recommended.
- Device settings in the network can be managed as all or separately.



No.	Serial No.	Device ID	Status	Preset	Collected	Progress	Time
1	[P00100001]	GT000CM001	Collecting	450 ml	50 ml	11 %	01:23
2	[P00100002]	GT000CM002	Collecting	450 ml	232 ml	51 %	06:30
3	[P00100003]	GT000CM003	Low Flow	450 ml	254 ml	56 %	02:42
4	[P00100004]	GT000CM004	Collecting	450 ml	254 ml	56 %	02:42
5	[P00100005]	GT000CM005	Ready				
6	[P00100006]						
7	[P00100007]	GT000CM007	End	450 ml	451 ml	100 %	08:46
8	[P00100008]	GT000CM008	Ready				
9	[P00100009]	GT000CM009	High Flow	450 ml	300 ml	66 %	07:05
10	[P00100010]						
11	[P00100011]	GT000CM11	11 Pace	450 ml	450 ml	95 %	10:02
12	[P00100012]						
13							
14							
15							
16							
17							
18							



CENTRON

AccuMix™ CM760

DATA COLLECTION MIXER

Optional Chart

	Selective Item	Including	Note
Unit Configuration	• CM760 Basic	<ul style="list-style-type: none"> CM760 main unit AC power adapter User's manual 	<ul style="list-style-type: none"> Essential configuration for BASIC MODE operation ONLY BN128 battery pack is not included
	• CM760 Standard	<ul style="list-style-type: none"> CM760 Basic [Option D] included [Option C] included 	<ul style="list-style-type: none"> Standard configuration for DATA MODE operation BN128 battery pack is not included
	• CM760 Expansion	<ul style="list-style-type: none"> CM760 Standard [Option S] included BN128 battery pack 	<ul style="list-style-type: none"> Complete configuration with tube sealing feature
Optional Package	• [Option D] DATA Management Package	<ul style="list-style-type: none"> Barcode scanner Multi-functional remote control unit USB memory stick 	<ul style="list-style-type: none"> Supports DATA MODE operation Either [Option C] or Pole Mounting Kit may be required to hang a barcode scanner, multi-functional remote control unit and sealing hand unit
	• [Option C] Carrying Case Package	<ul style="list-style-type: none"> Carrying Case Pro (including device mounting platform, pole, hanger & thumb screw, plug extension adapter) 	<ul style="list-style-type: none"> Stackable and secured storage Easy transportation of all parts Main unit charging available with the case closed It can be used as collection stand for main unit Pole and hanger are mounted on device mounting platform
	• [Option S] Tube Sealer Package	<ul style="list-style-type: none"> Built-in <i>SureSeal™</i> tube sealer module Sealing hand unit & 1.8m(6ft) cable 	<ul style="list-style-type: none"> Built-in <i>SureSeal™</i> tube sealer module (SEM 01) BN128 battery pack must be installed
Supporting Device	• Collection Data Manager (CDM)	<ul style="list-style-type: none"> CDM module Antenna & USB cable Installation CD 	<ul style="list-style-type: none"> Wireless Modem with CDM software package Real-time collection site monitoring for up to 18 units Wireless data transferring to a computer Simultaneous device setting for a group of 18 units
	• BC164 Fast Battery Charger		<ul style="list-style-type: none"> AC powered fast multi-battery charger Charging of 6 BN128 battery packs

※ Optional parts including BN128 battery pack may be sold separately. For more information about package customization, please visit our website.

Specification

Product	Data Collection Mixer
Model	CM760
Power	18V \sim 1.67A + \rightarrow -
Adapter	100-240V \sim 50/60Hz 0.8A
Dimension	Main Unit: 200(W)mm/400(L)mm/176(H)mm
	Carrying Case: 280(W)mm/450(L)mm/380(H)mm

Information



DISTRIBUTOR

Centron Centron Corporation

Address: 44 Beolmal-ro, Dongan-gu, Anyang, Gyeonggi-do,
Postal Code 431-804 / Republic of Korea
Phone: +82-31-422-7890 / **Fax:** +82-31-422-7866
E-mail: info@centrons.com
Website: www.centrons.com



※ The specification and design are subject to change without prior notice for product upgrades.